



Coated Fabric Solutions

**WALL COVERING FOR COMMERCIAL ENVIRONMENT**

**Weaver**

**HOSPITALITY | RESIDENTIAL | COMMERCIAL**

**100% PHTHALATE -FREE VINYL**

**WWW.INSTYLECOATEDFABRICSOLUTIONS.COM**

# WEAVER - COLORS & TEXTURES WALL DECORATIVE

## PRODUCT NAME

Weaver I is constructed as wall covering material for public institution and commercial and residential environment.

## APPLICATION



Hospitality



HealthCare



Commercial



Residential



Casino

## TECHNICAL INFORMATION



Thickness : Available 32mils (0.8mm +/- 0.1mm) - 5 layers composite



Weight : 545 +/- 30g/square meter



Structure : PVC-compound abt. 82% PES/Cotton abt. 18%



Flame Resistance: ASTM E-84 Class A

## CHARACTERISTICS & PROPERTIES

- Eco-Friendly—Phthalate-Free, DMF Free
- 5 layers structure
- Printing, Embossing, Treatment Layer
- Excellent tearing strength
- Special UV preventing treatment
- Stretchable high grade backing fabric
- Long service life
- Supple & Elastic material properties
- No added FR/Anti-Bacteria



inStyle Coated Fabric Solutions, LLC 3585 NE207th St, Suite 1811 Miami, FL 33180

TEL:978.566.2772 E:info@instylecoatedfabricsolutions.com

# WEAVER - COLORS & TEXTURES WALL DECORATIVE

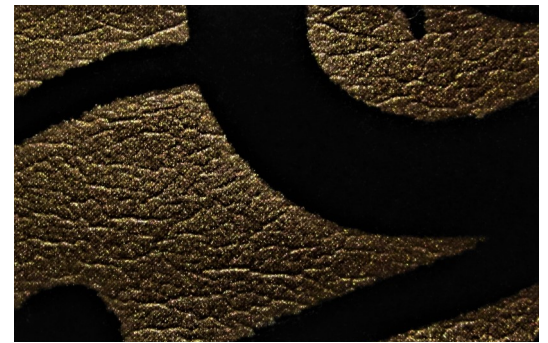
Weaver H - 2



Weaver H - 3



Weaver H - 4



Weaver H - 1

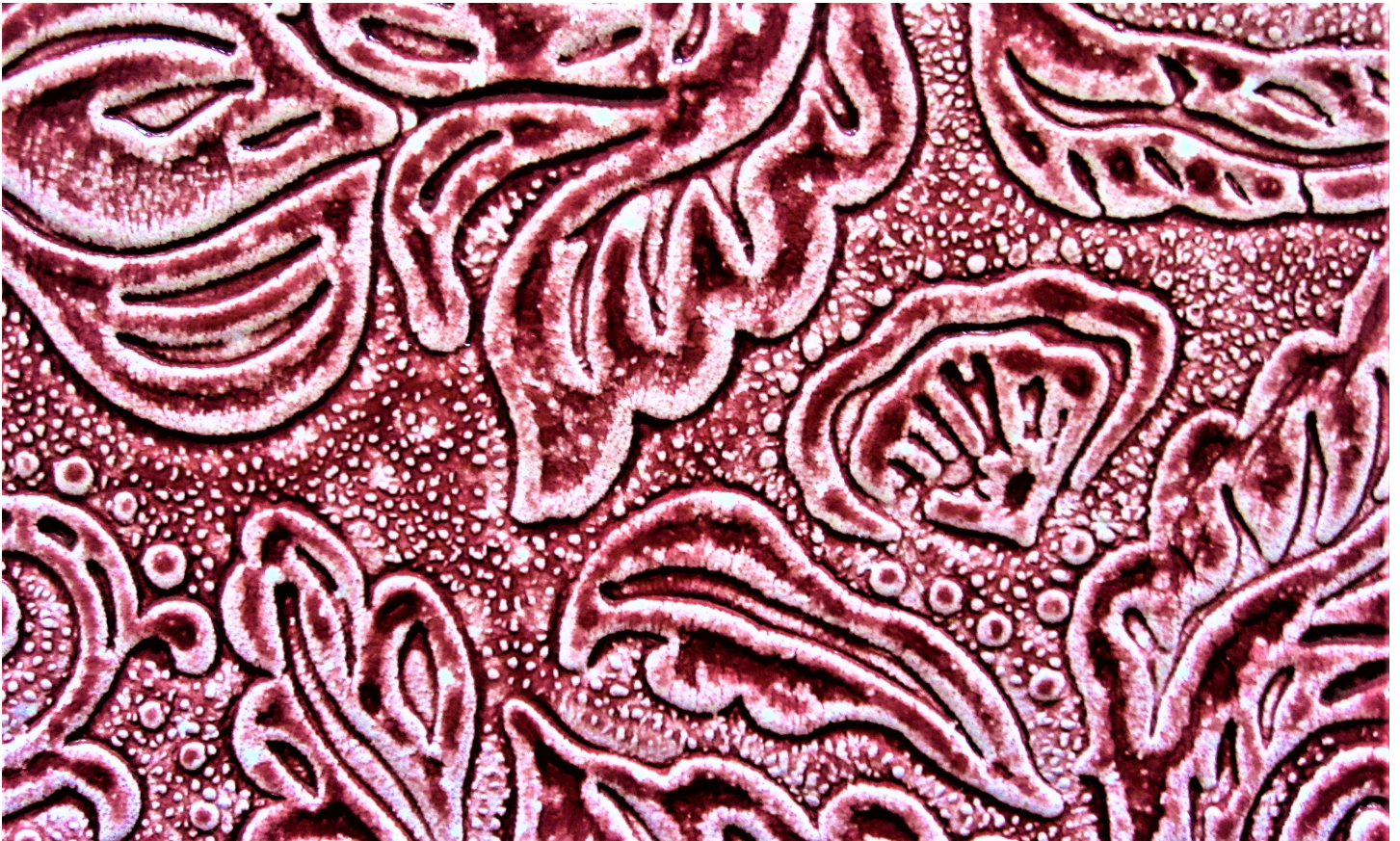


Weaver W - 6

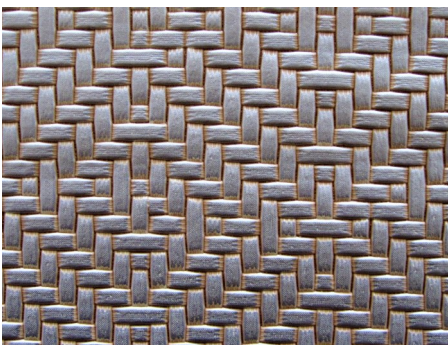


# WEAVER - COLORS & TEXTURES WALL DECORATIVE

Weaver W - 5



Weaver D - 7



Weaver D - 8



Weaver D - 9



Weaver D - 10



Weaver D - 11

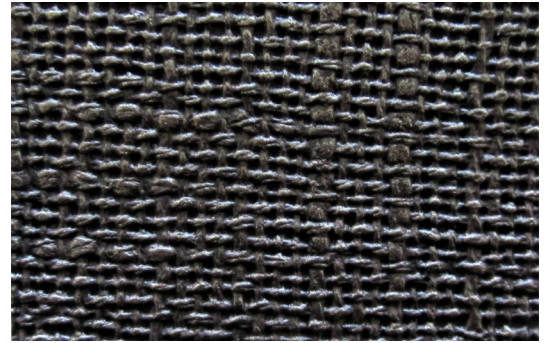


# WEAVER - COLORS & TEXTURES WALL DECORATIVE

Weaver D - 23



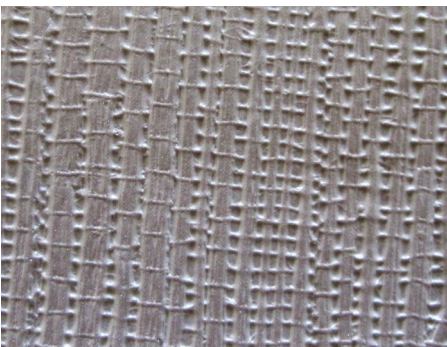
Weaver D - 13



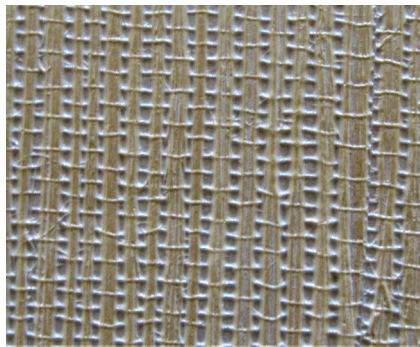
Weaver D - 14



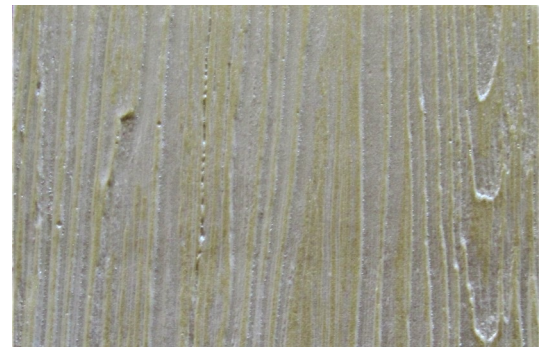
Weaver D - 15



Weaver D - 16



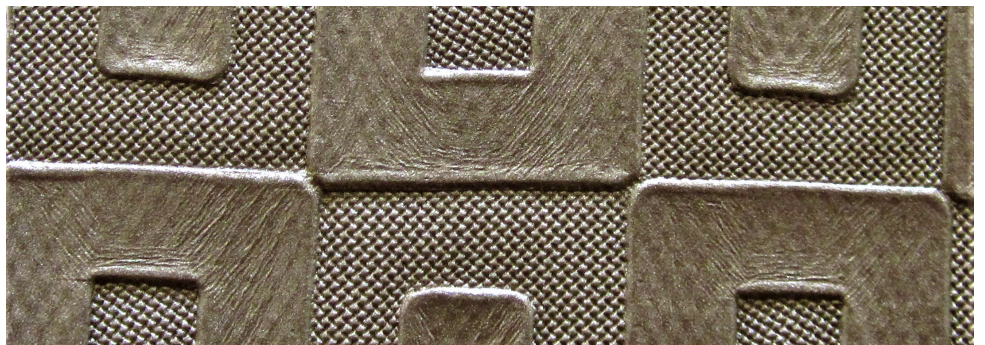
Weaver D - 17



Weaver D - 18

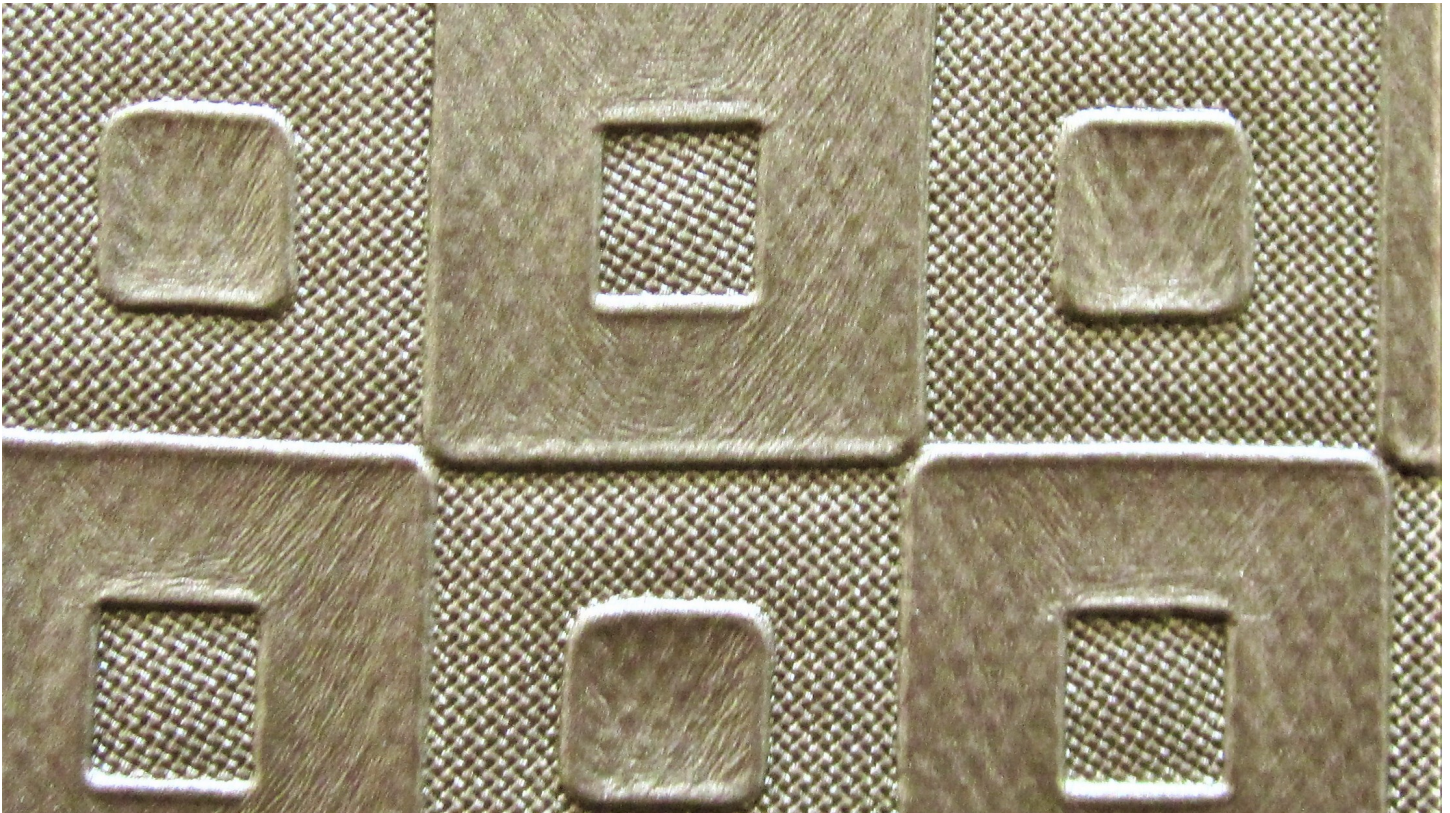


Weaver D - 19

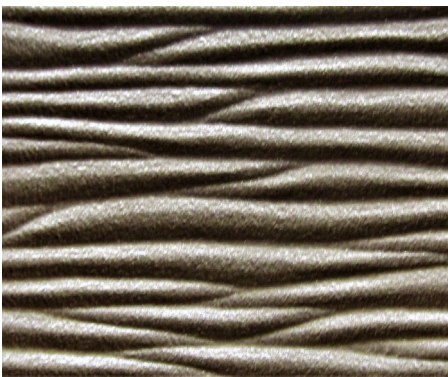


# WEAVER - COLORS & TEXTURES WALL DECORATIVE

Weaver D - 20



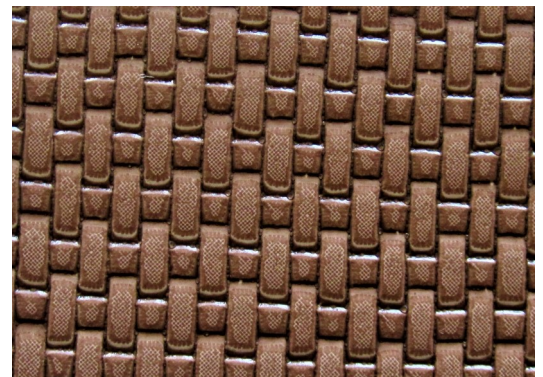
Weaver D - 21



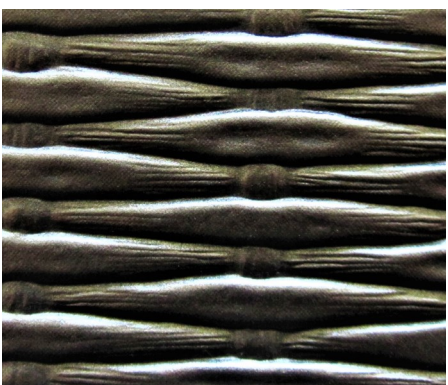
Weaver D - 22



Weaver D - 12



Weaver D - 24



Weaver D - 25



Weaver D - 26

