

INSTYLE

Coated Fabric Solutions

CRUISE LINES I HOSPITALITY FAUX LEATHER INTERIOR



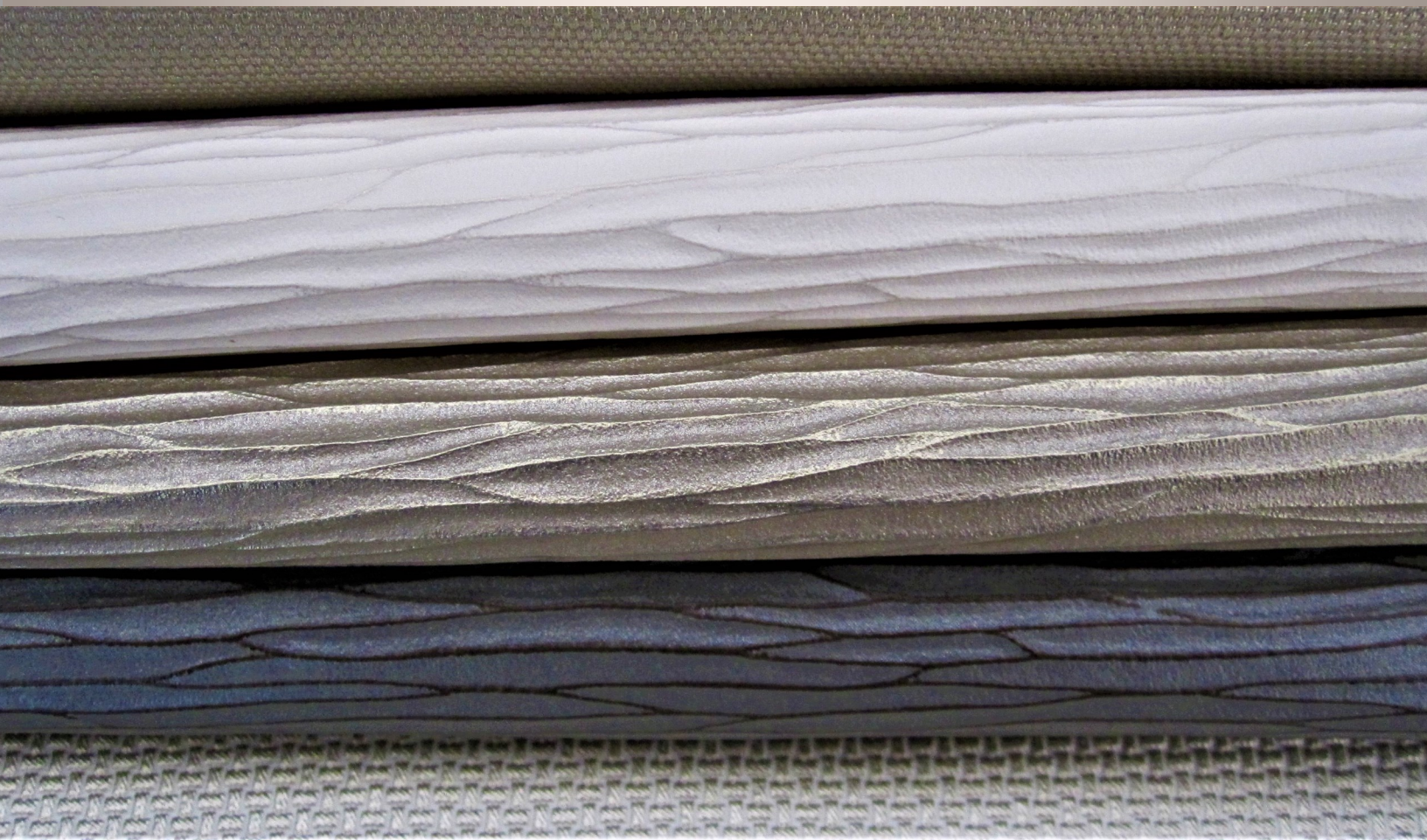
Solmare S - Pearl Faux Leather

Elegant and Sophisticated Eco-Friendly Faux Leather

WWW.INSTYLECOATEDFABRICSOLUTIONS.COM



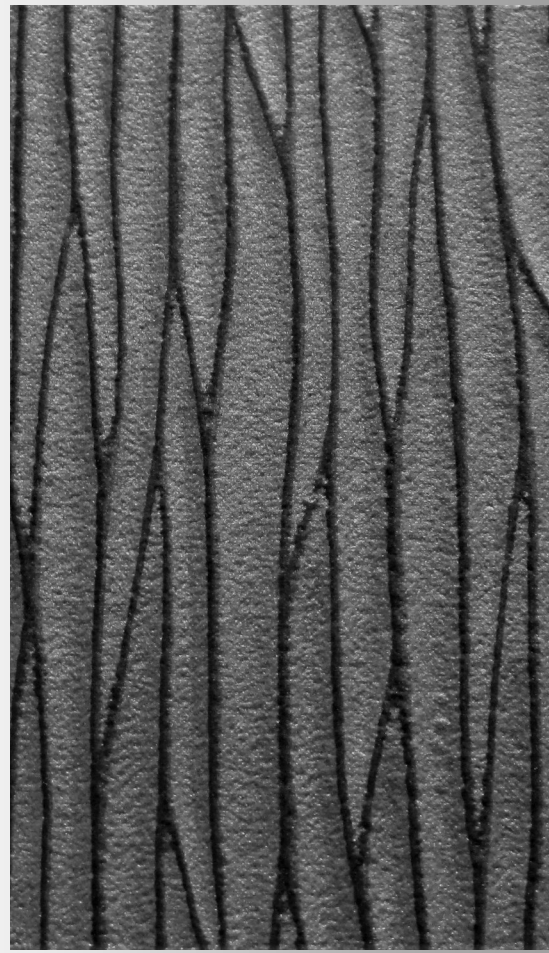
SOLMARE S - PEARL FAUX LEATHER UPHOLSTERY



Solmare S - 1

Solmare S - 2

Solmare S - 3



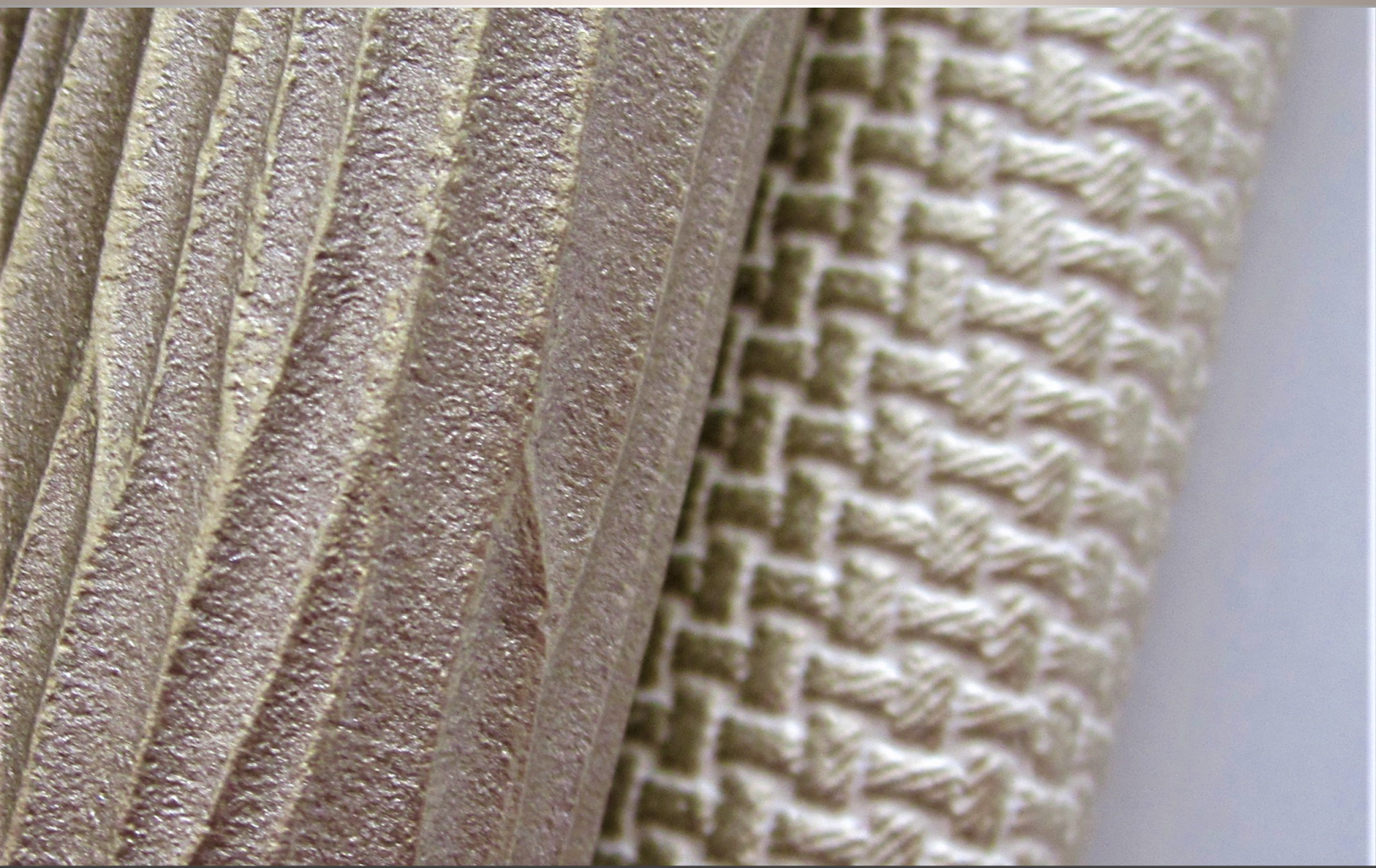
SOLMARE S - MIX PEARL FAUX LEATHER UPHOLSTERY



Solmare S - 1

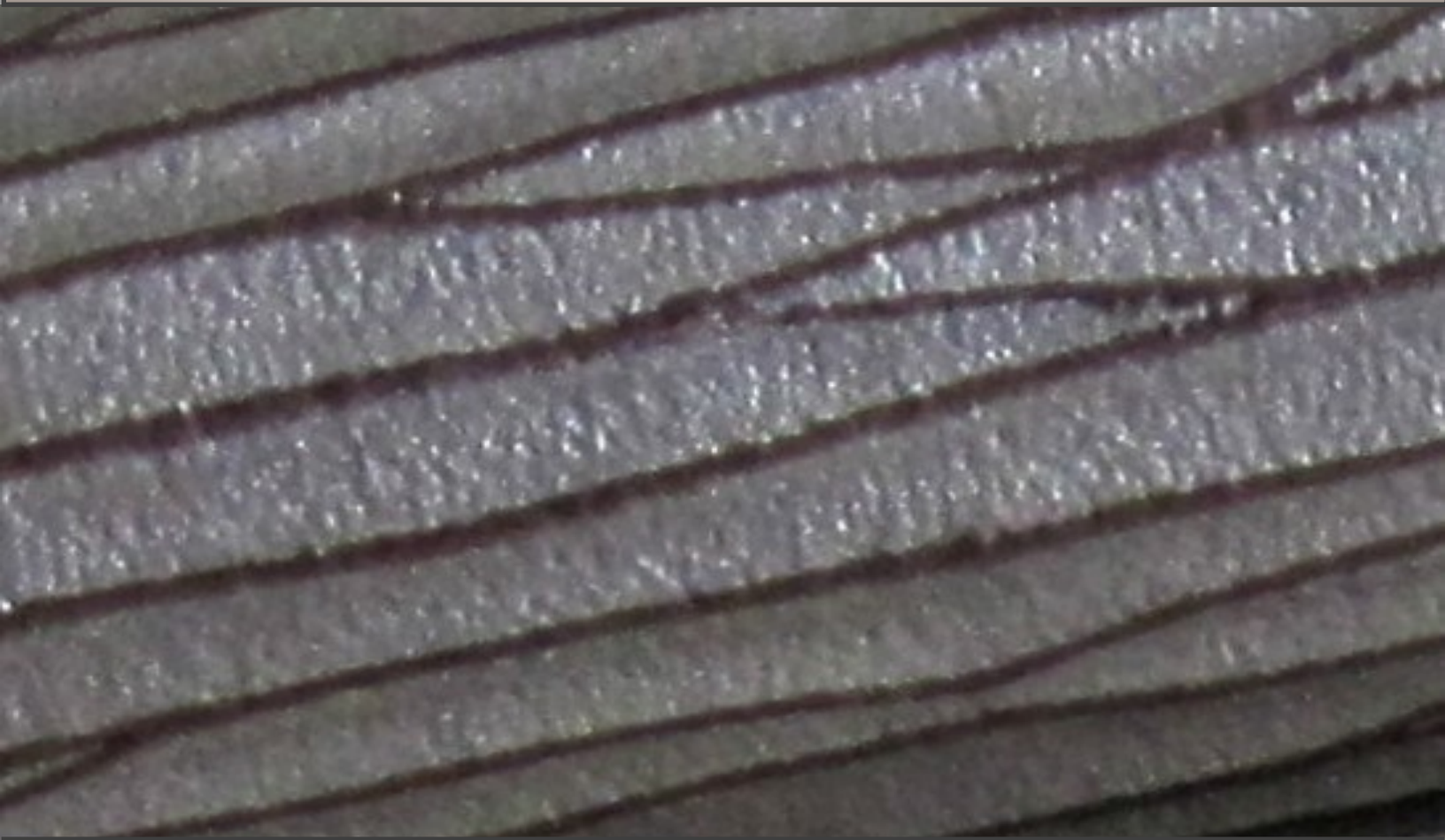


SOLMARE S - MIX PEARL FAUX LEATHER UPHOLSTERY

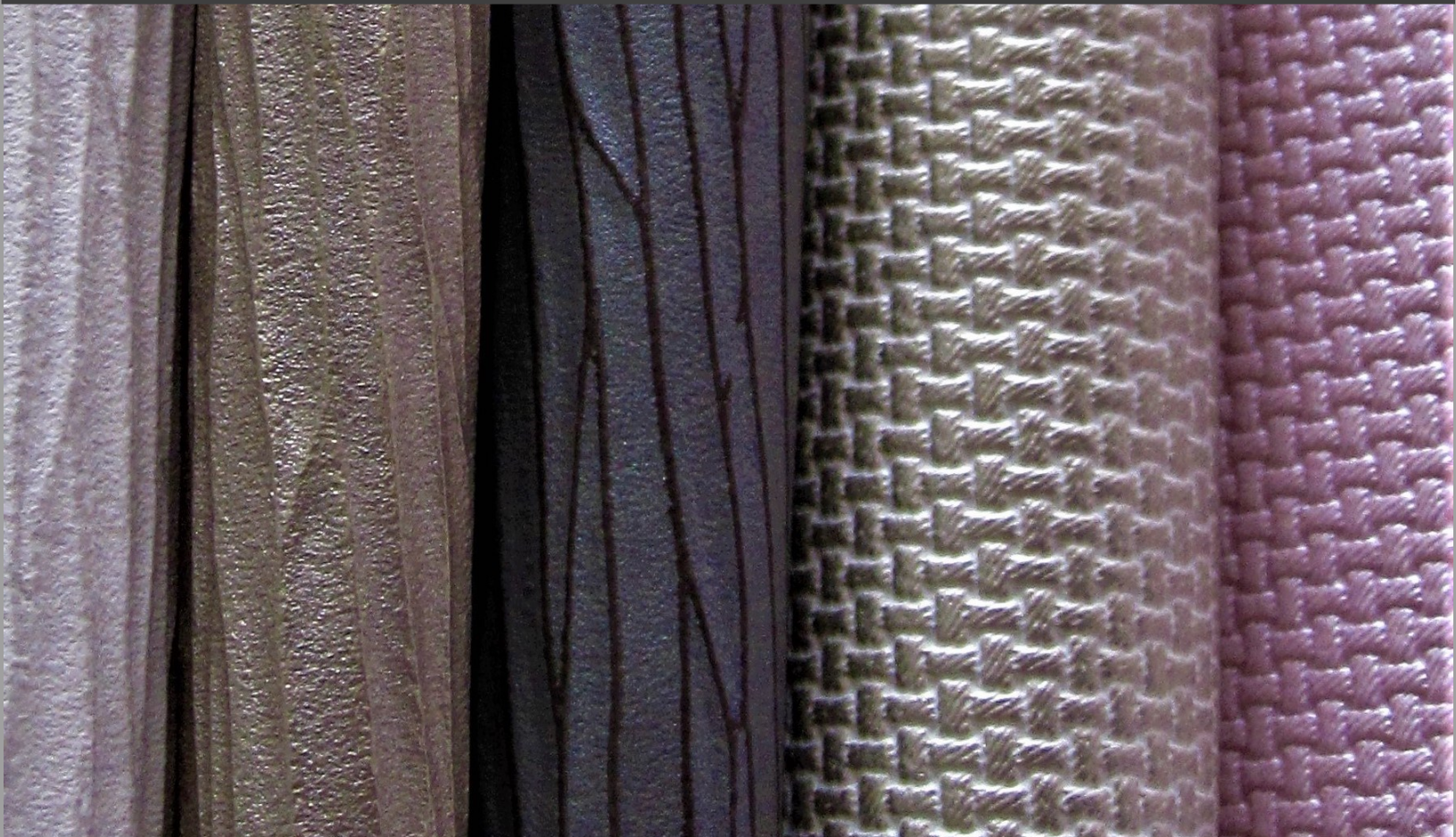


Solmare S - 2





SOLMARE S - MIX PEARL FAUX LEATHER UPHOLSTERY



SOLMARE S - PEARL FAUX LEATHER UPHOLSTERY



PRODUCT NAME

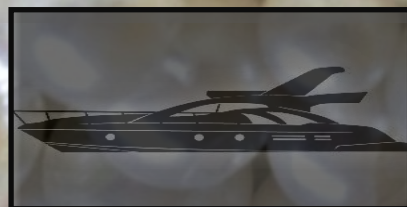
Solmare S is an elegant and sophisticated pearl faux leather that designed for cruise lines and hospitality interior. They come in with beautiful colors with very slight of luster on their surface to visible blurring of reflected light sources. Solmare S has superior physical properties, IMO and has both; environmental and health benefits.



VESSEL



HOSPITALITY

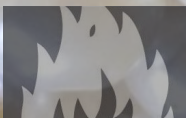


MEGA YACHT



RIVER CRUISE

TECHNICAL INFORMATION



Complying with IMO 2010 FTP code: Part 8 for resistance to the ignition of flame for upholstery, CE/MED:B and D, Approved European Union MED 2010 ABS Italy S.R.L , U.S . Coast Guard Module B, California Technical TB117-2013 & UFAC/ NFPA 26 U.S.



Abrasion Resistance : 500,000 Cycles + Double rubs: ASTM 4157/ - Wyzenbeek



Anti-Bacterial Resistance: ATCC 8339 & ATCC 6538P



Anti - Microbial / Mildew / Pink Resistance: ASTM G 21—15



Anti-Stain Resistance: Coffee, Denim , Cooking Oil, Lipstick, Soy Sauce , Metanol, Red-Chili Pepper Paste, and more



Colorfastness To Light: AATCC 16.3, 200 + hours, Grade 4.5

CHARACTERISTICS & PROPERTIES

- Eco-Friendly—100% Phthalate-Free
- Stain Resistance
- Anti-microbial & Anti-Microbial Resistance
- Excellent durability of abrasion passing 500,000 cycles double rubs
- Meet green certificates worldwide proven including US Consumer Product Safety (CPSIA)
- Excellent Resist to Peeling and Cracking
- Meet all ACT Heavy Duty Performance
- Doesn't contain any harmful substances such as heavy metal, formaldehyde Free

