



# MARINE FAUX LEATHER

INTERIORS | EXTERIORS



**Eleea Marine**

**SUSTAINABLE MARINE FAUX LEATHER BOOK**

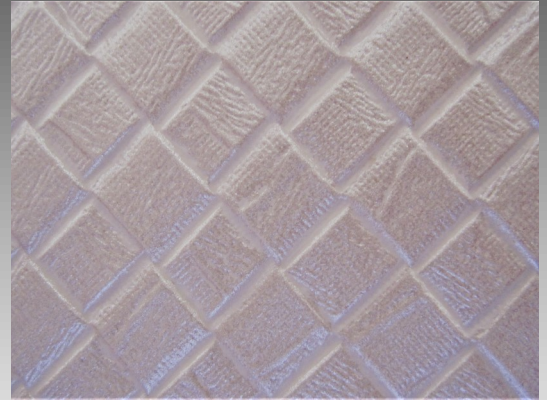
**Volume Two**

# Eleea I - COLORS & TEXTURES VESSELS UPHOLSTERY

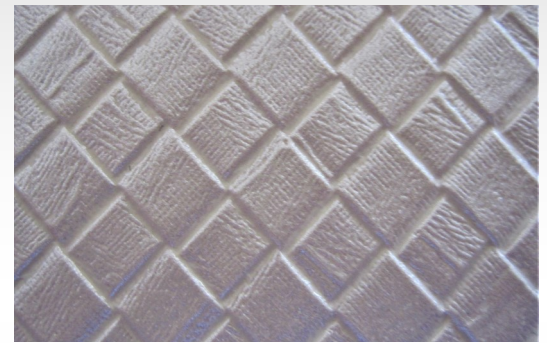
Eleea I - Colors



Eleea I - 1



Eleea I - 2



Eleea I - Colors & Textures

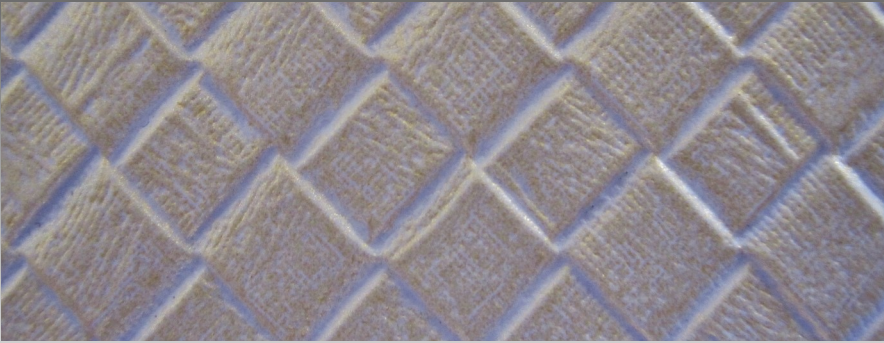


Eleea I - 6

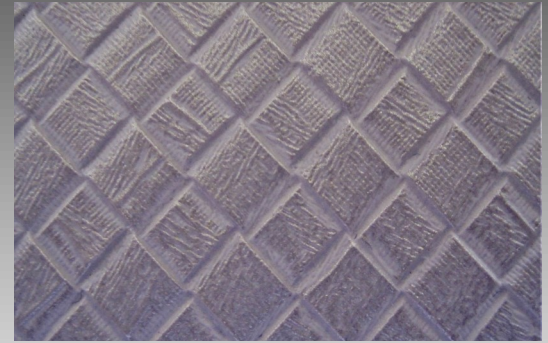


# Eleea I - COLORS & TEXTURES VESSELS UPHOLSTERY

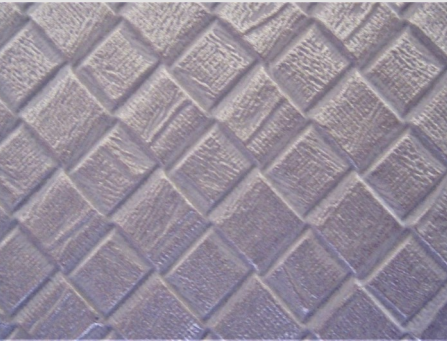
Eleea I - 3



Eleea I - 4



Eleea I - 5



Eleea I - 7



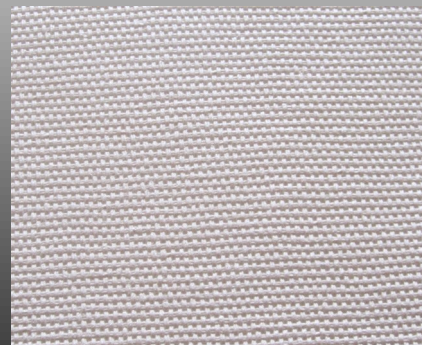
Eleea I - 8



Eleea I - 9



Eleea I - 10



Eleea I - 11

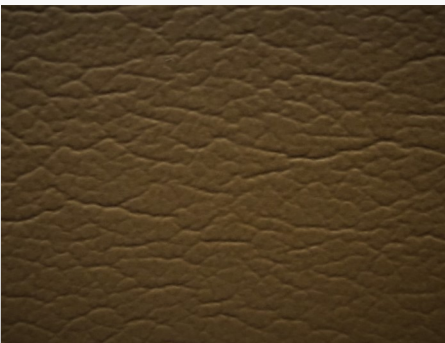


# Eleea I - COLORS & TEXTURES VESSELS UPHOLSTERY

Eleea I - Colors & Textures



Eleea I - 12



Eleea I - 15



Eleea I - 14



Eleea I - 13



# Eleea I - COLORS & TEXTURES VESSELS UPHOLSTERY

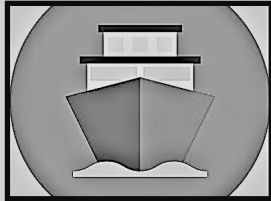
## PRODUCT NAME

Eleea I is deep genuine 100% Phthalate -Free vinyl faux leather for the use in the upholstery for vessel interiors , cabin sofas, armchairs and chairs.

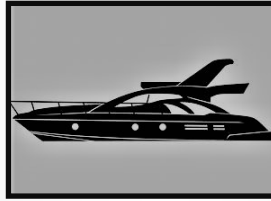
## APPLICATION



VESSEL



SHIP



YACHT



SPEED BOAT



FISHING BOAT

## TECHNICAL INFORMATION



**Thickness :** Available 47mils (1.2mm) & 59mils (1.5mm) - 5 layers composite



**Abrasion Resistance :** 150,000+ double rubs-Wyzenbeek (cotton duck)



**Colorfastness To Crocking:** Wet –Class 4.5 I Dry– Class 4.5



**Colorfastness To Light:** 200 + hours



**Flame Resistance:** International code IMO 2010 FTP code for upholstery, California Technical TB117-2013 & UFAC/ NFPA 26

## CHARACTERISTICS & PROPERTIES

- Eco-Friendly—Phthalate-Free, DMF Free
- Soft Surface touch
- Excellent tearing strength
- Excellent durability of abrasion
- Stretchable high grade backing fabric
- Long service life
- Easy to Clean
- Supple & Elastic material properties
- No added FR/Anti-Bacteria



inStyle Coated Fabric Solutions, LLC 3585 NE207th St, Suite 1811 Miami, FL 33180

TEL:978.566.2772 E:info@instylecoatedfabricsolutions.com