

INSTYLE

Coated Fabric Solutions

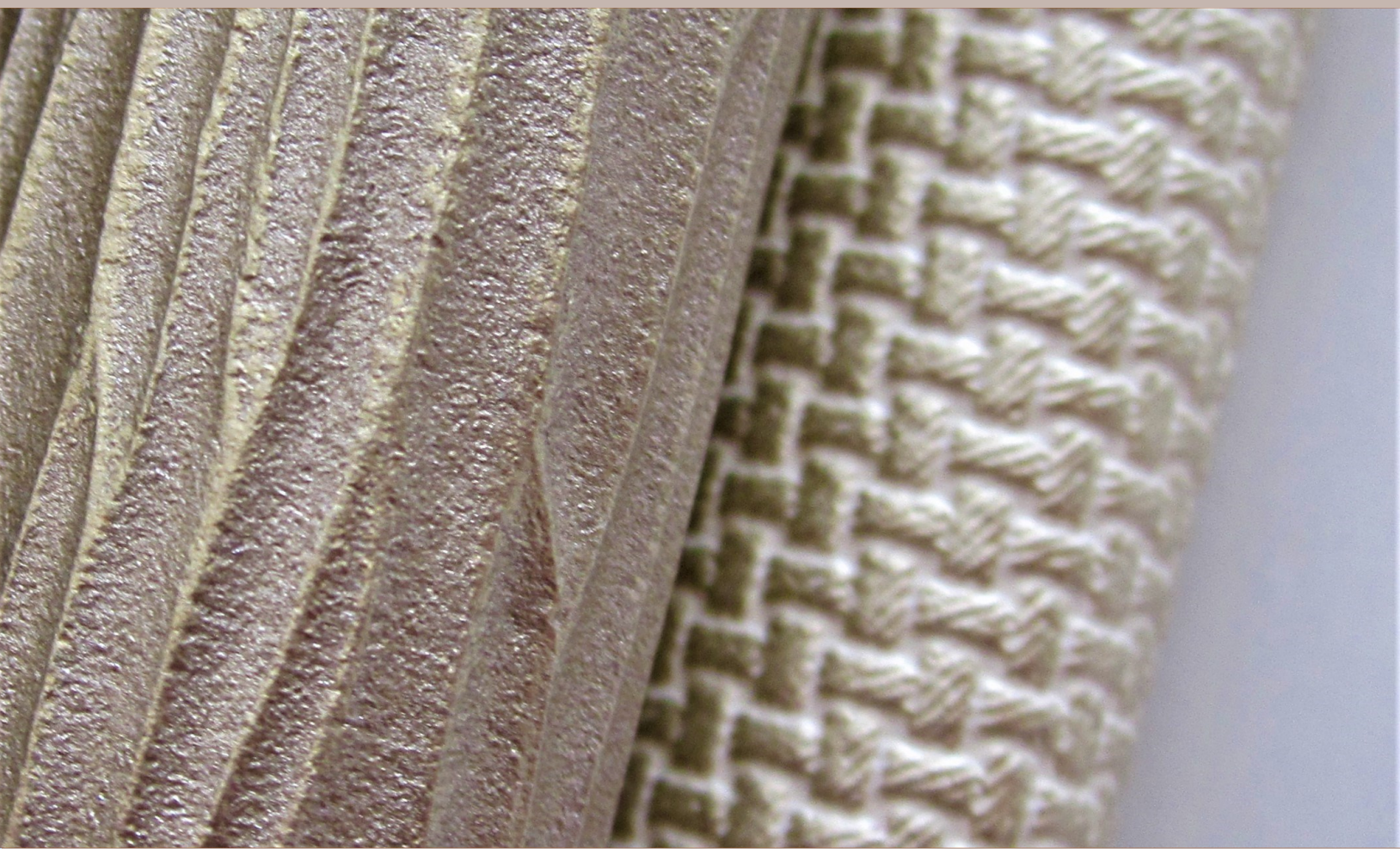
CRUISE SHIP FAUX LEATHER INTERIOR



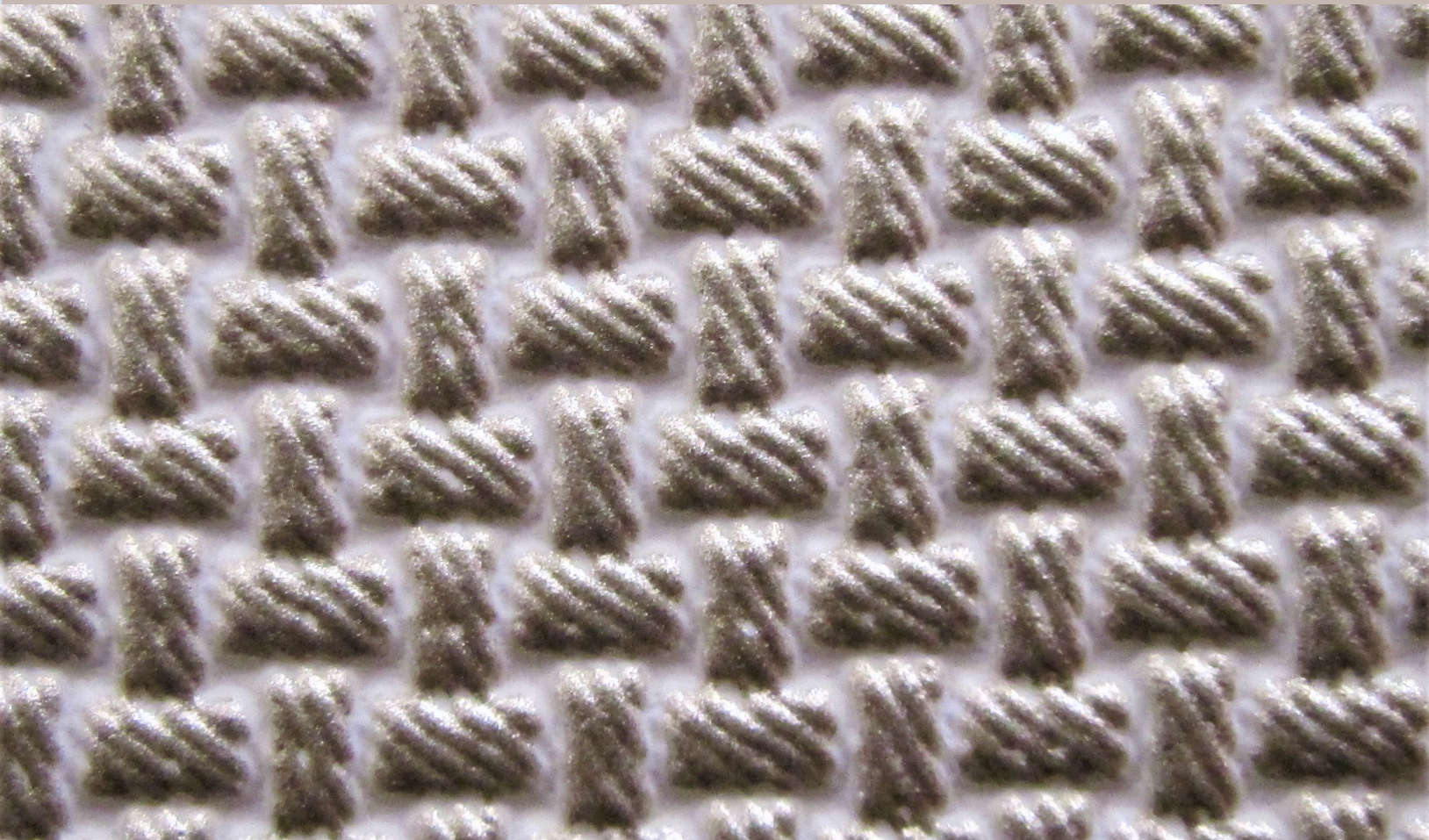
Corda Mer S - Pearl Faux leather

Elegant and Sophisticated Two Tone Faux Leather

WWW.INSTYLECOATEDFABRICSOLUTIONS.COM



Corda Mer S - 1

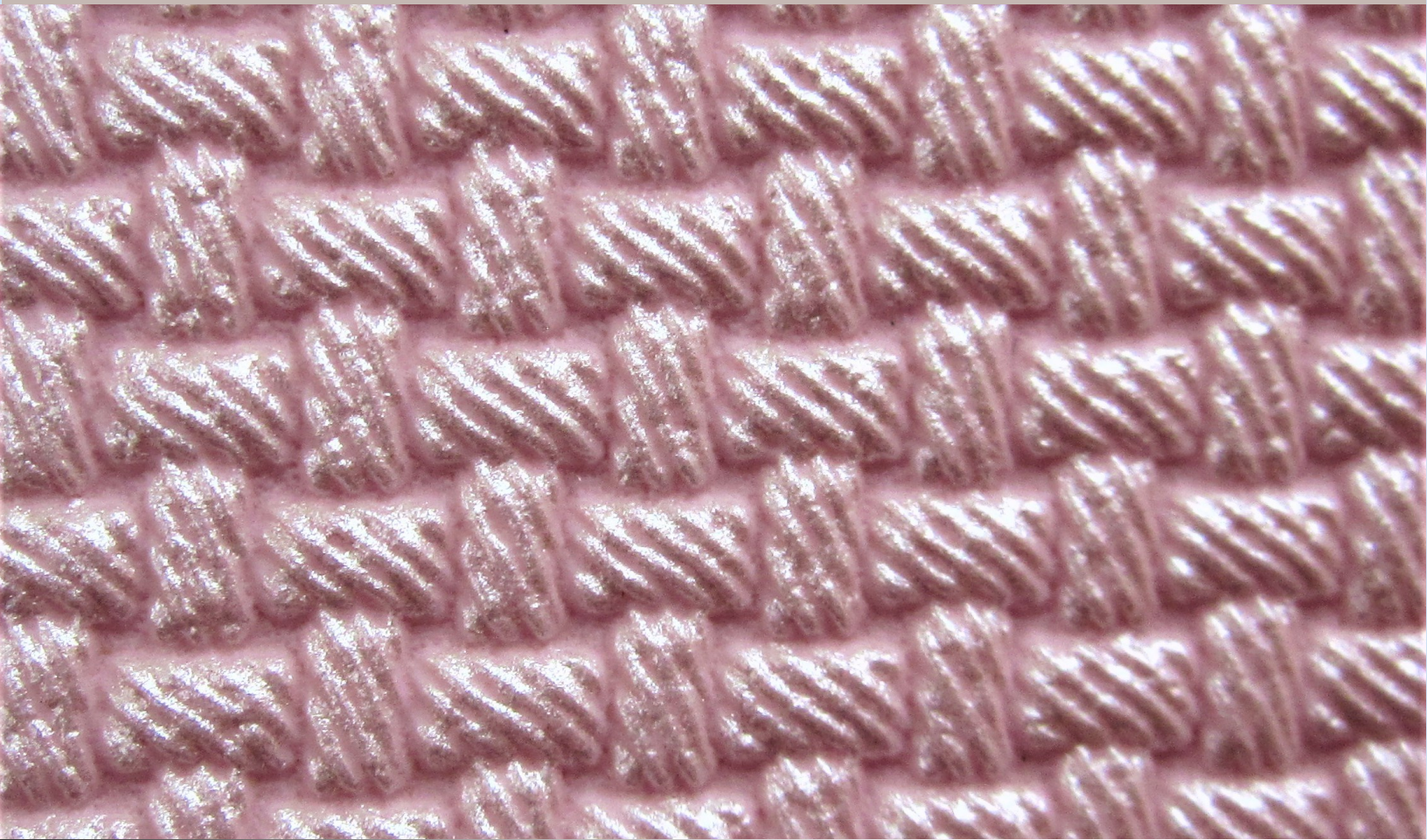




CORDA MER S - COLORS & TEXTURES FAUX LEATHER UPHOLSTERY



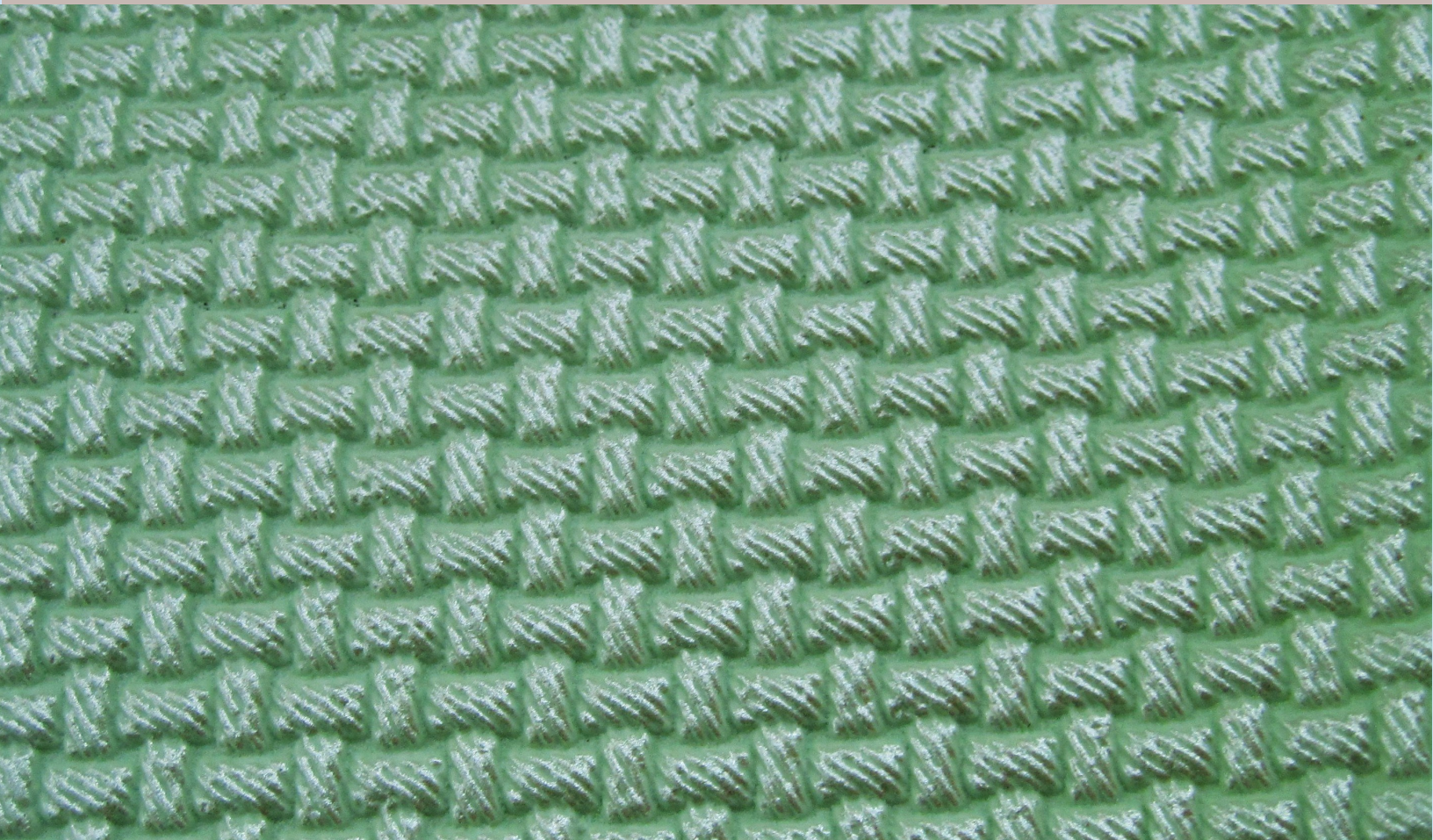
CORDA MER S - 3



CORDA MER S - COLORS & TEXTURES FAUX LEATHER UPHOLSTERY



CORDA MER S - 2



PRODUCT NAME

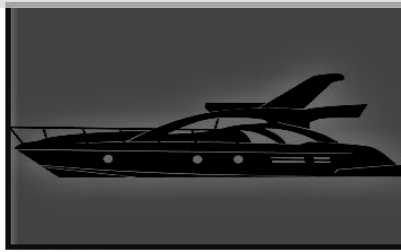
Corda Mer is an elegant and sophisticated vessel faux leather interior with a hint of metallic two tones light colors. Their valley covered in light base colors from medium golden tone, light rose and pearl with light bronze overtones. Designed specifically for the use in the upholstery for vessel, river cruise and hospitality interior project.



VESSEL



HOSPITALITY



MEGA YACHT



RIVER CRUISE

TECHNICAL INFORMATION



Complying with IMO 2010 FTP code: Part 8 for resistance to the ignition of flame for upholstery, CE/MED:B and D, Approved European Union MED 2010 ABS Italy S.R.L , U.S . Coast Guard Module B, California Technical TB117-2013 & UFAC/ NFPA 26 U.S.



Abrasion Resistance : 500,000 Cycles + Double rubs: ASTM 4157/ - Wyzenbeek (cotton duck)



Anti-Bacterial Resistance: ATCC 8339 & ATCC 6538P



Anti - Microbial / Mildew / Pink Resistance: ASTM G 21—15



Anti-Stain Resistance: Coffee, Denim , Cooking Oil, Lipstick, Soy Sauce , Metanol, Red-Chili Pepper Paste, and more



Colorfastness To Light: AATCC 16.3, 200 + hours, Grade 4.5

CHARACTERISTICS & PROPERTIES

- **Eco-Friendly—100% Phthalate-Free**
- **Stain Resistance**
- **Anti-microbial & Anti-Microbial Resistance**
- **Excellent durability of abrasion passing 500,000 cycles double rubs**
- **Meet green certificates worldwide proven including US Consumer Product Safety (CPSIA)**
- **Excellent Resist to Peeling and Cracking**
- **Meet all ACT Heavy Duty Performance**
- **Doesn't contain any harmful substances such as heavy metal, formaldehyde Free**

